
Introduction of LSC “F” Version for the 204mm and 255mm Models

The LSC-204 and LSC-255 compressors are being upgraded to an “F” version.

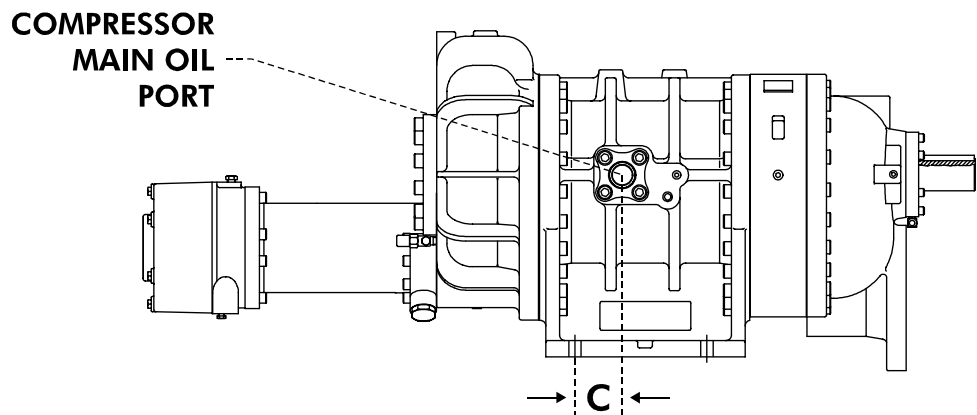
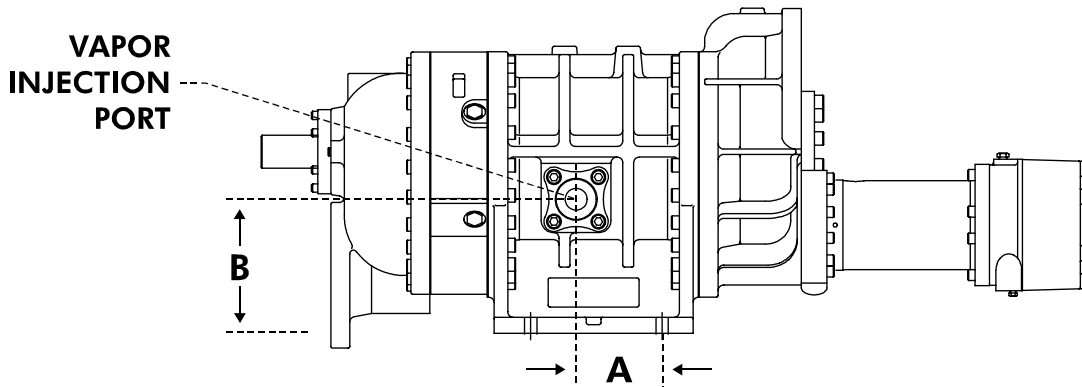
1. “F” Version Features and Benefits

- **DB-Profile Rotors:** New rotor profile yields improved efficiency.
- **Enhanced Oil Management:** New internal oil porting reduces amount of oil mixing with suction gas and improves efficiency.
- **Suction Porting:** Enlarged suction port reduces entrance losses of suction gas entering the rotors.
- **Bellows Shaft Seal:** Advanced bellows design improves leak rates.
- **Precision Sleeve Bearings:** Improved design tolerances allow replacement of the sleeve bearings in the field without any machining operations.
- **Vapor Injection Port:** The VI port has been relocated to optimize the compressor for maximum capacity and improved \$/ton. In addition the connection is made directly on the compressor housing, eliminating the need for a special adapter and angled piping.

2. **Service Parts and Remanufactured (RMF) Compressors:** “E” version RMF compressors and service parts will be available for the foreseeable future.

3. **Implementation:** New LSC-204 “F” versions, beginning with the 2015, will be phased-in starting in May 1997.

4. **Dimensional Changes:** The vapor injection port and main bearing oil port have been moved. All other connections and dimensions are identical. See attached sheet for dimensional changes.



	E Version			F Version		
	A	B	C	D	E	F
2010	3 ⁷ / ₆₄	3 ¹⁵ / ₁₆	¹ / ₁₆	³ / ₄	9 ¹ / ₄	¹ / ₃₂
2015	6 ¹¹ / ₆₄	3 ¹⁵ / ₁₆	2 ⁵ / ₁₆	4 ¹ / ₄	9 ¹ / ₄	2 ⁵ / ₁₆
2018	7 ²⁹ / ₃₂	3 ¹⁵ / ₁₆	3 ¹ / ₄	5 ¹ / ₃₂	9 ¹ / ₄	3 ³ / ₁₆
2510	4 ²⁵ / ₃₂	3 ⁵ / ₁₆	1 ⁹ / ₁₆	4 ¹ / ₈	9 ²⁷ / ₃₂	1 ⁹ / ₁₆
2512	6 ⁷ / ₃₂	3 ⁵ / ₁₆	1 ³ / ₁₆	4 ²¹ / ₃₂	9 ⁵⁵ / ₆₄	1
2151	8 ³¹ / ₆₄	3 ⁵ / ₁₆	3 ¹⁵ / ₁₆	5 ⁹ / ₁₆	8 ⁵¹ / ₆₄	3 ¹⁵ / ₁₆
2516	9 ⁹ / ₁₆	3 ⁵ / ₁₆	7 ³ / ₄	6 ²⁹ / ₆₄	8 ⁵¹ / ₆₄	3 ⁵ / ₈
2519	7 ⁵ / ₈	3 ⁵ / ₁₆	4 ¹ / ₄	7 ²⁹ / ₆₄	8 ⁵¹ / ₆₄	4 ⁹ / ₃₂

NOTE: All dimensions are expressed in inches.