



Hartford Compressors Inc.
179 South Street
West Hartford, CT 06110 USA
Phone: 860-249-8671 * Fax: 860-548-1705
E-mail: webmaster@hartfordcompressors.com

SERVICE BULLETIN

Differences Between The 110mm “K” and “L” Version MSC

There are many changes between the “K” version and the “L” version 110mm MSC’s. The following table explains the differences between the two versions. Please use this chart to review the diagrams on pages 2 through 6.

CHARACTERISTICS	“K” VERSION	“L” VERSION
Height	38.00”	40.75”
Maximum Width	25.67”	26.76”
Diameter	16.50”	20.85” (Flanges)
Mounting Foot Holes	10.38” Square Pattern	12.00” Square Pattern
Suction Location	15.00” Elevation from Compressor mounting feet	15.63” Elevation from Compressor mounting feet
Discharge Location	Located on side of Upper Enclosure 180° from suction	Located on top of Upper Enclosure
Vapor Injection Location	Common location for 1111, 1113 & 1117 models	Varying location dependant on Compressor model L/D ratio
Liquid Injection Location	Common location for 1111, 1113 & 1117 models	Varying location dependant on Compressor model L/D ratio

Electrical Components

- We now use Kriwan motor protectors and sensors on all MSC compressors. K version compressors being replaced by L versions can reuse existing Texas Instruments motor protector or use new Kriwan control. (HCI part number #055970A1) A new Kriwan motor protector (#055970A1) must be used when replacing an existing 110mm “K” version or 102mm “J” version using a Robertshaw motor protector.
- The 110mm “L” version compressors are equipped with the same motor as the “K” version. All electrical components should be compatible as long as the same conditions exist.

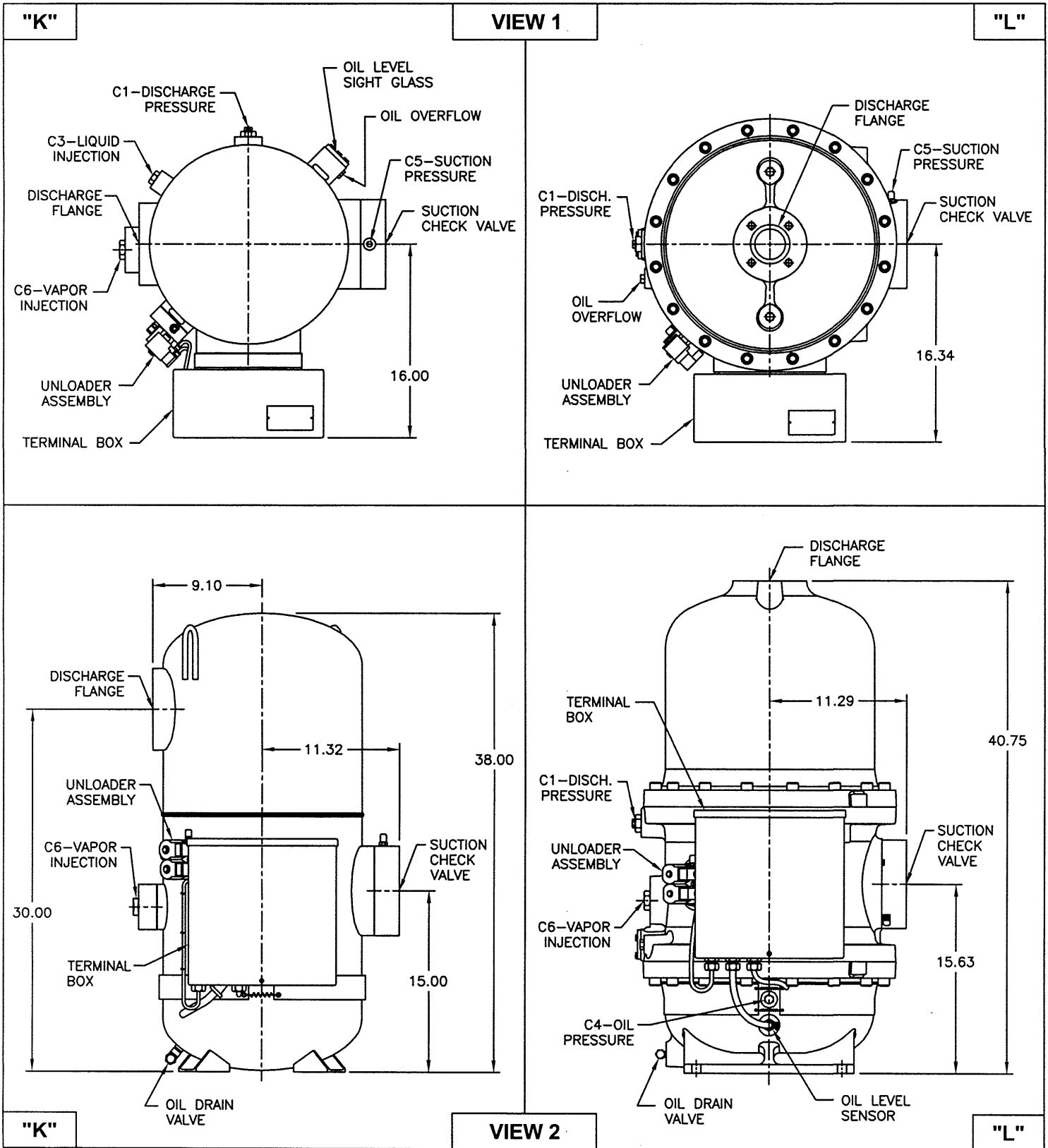
Compressor Connection Kits

- Although the physical locations of many compressor connections have changed on the “L” version, the connection sizes and configurations have remained the same as the “K” version. Therefore any existing kits may be reused (i.e.: Service valves, flanges, adapters, etc.)

* **Additional Pipe Fittings are required to connect the new compressor’s connections to the existing piping. These fittings must be field supplied.**

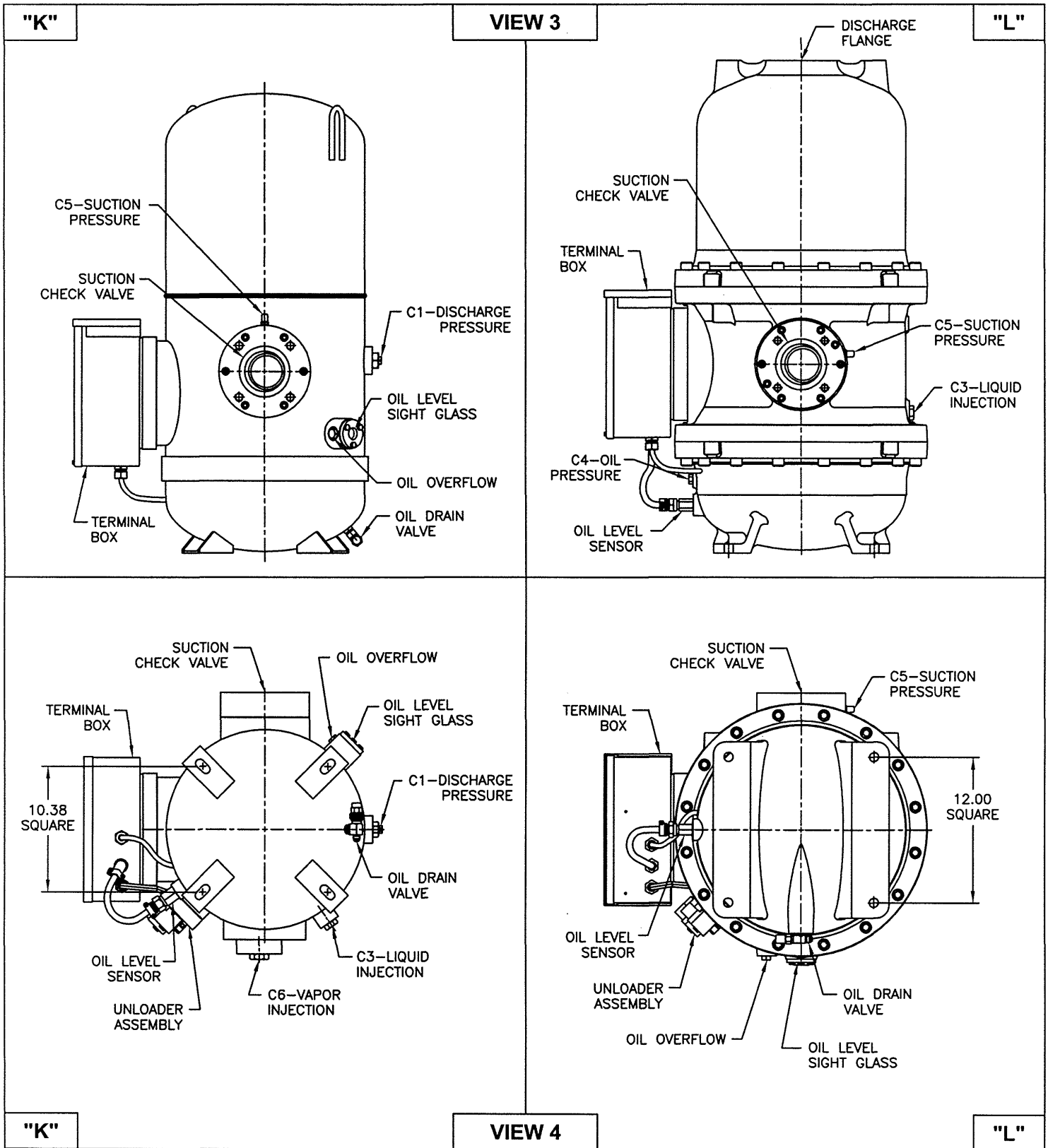
SERVICE BULLETIN

Differences Between The 110mm "K" and "L" Version MSC



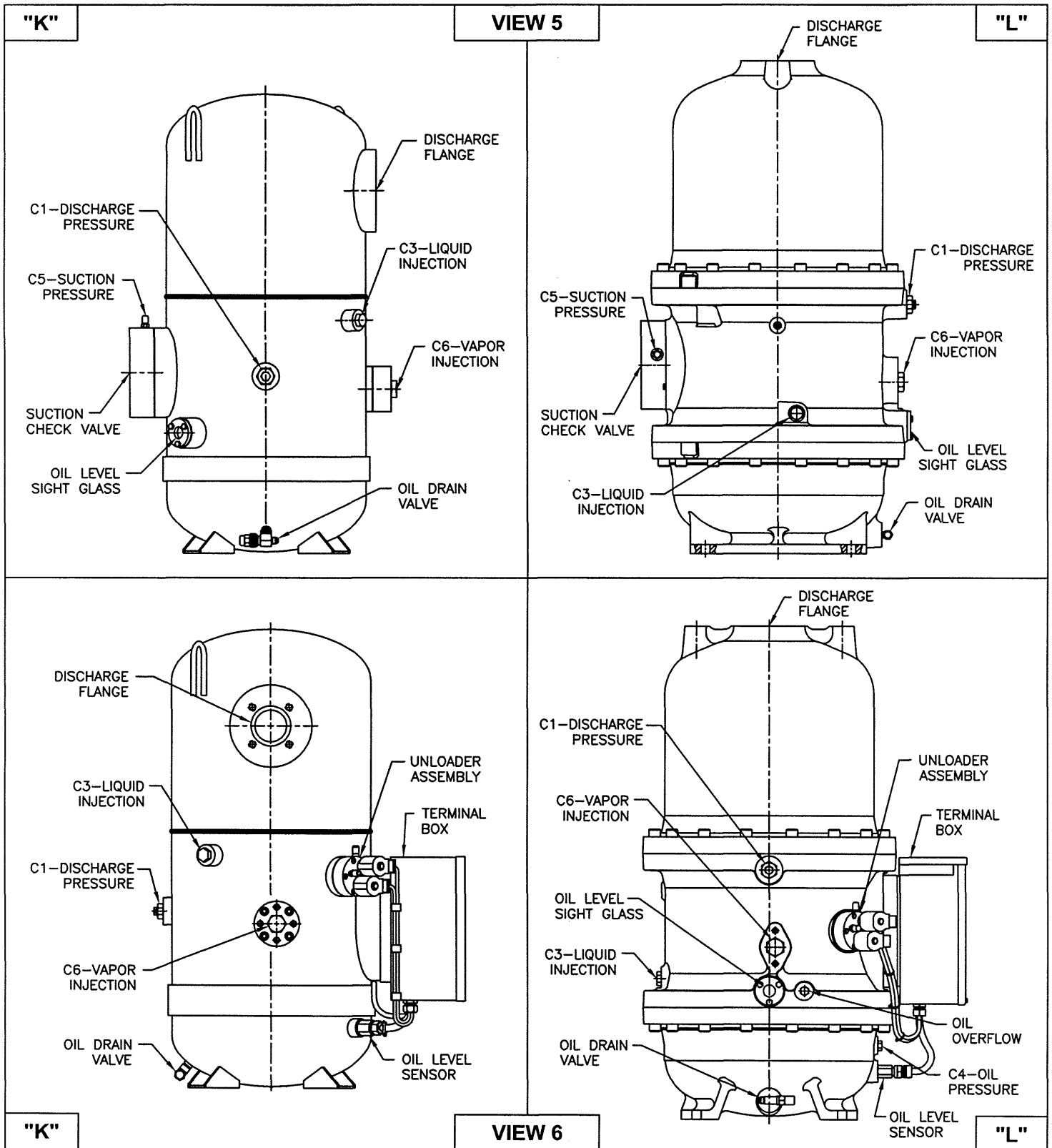
SERVICE BULLETIN

Differences Between The 110mm "K" and "L" Version MSC



SERVICE BULLETIN

Differences Between The 110mm "K" and "L" Version MSC



SERVICE BULLETIN: Differences Between The 110mm "K" and "L" Version MSC

