

MSC-110 with Vapor Injection (6X6) and Replacement of Existing MSC-110 Compressors (6L6 / 6N4)

CHARACTERISTICS	"6L6" COMPRESSOR	"6X6" COMPRESSOR
Height	38"	38"
Diameter	16½"	16½"
Suction Service Valve	1111 Kit # 053572A2 1113 Kit # 053572A2 1117 Kit # 053572A2	1111 Kit # 053572A9 1113 Kit # 053572A9 1117 Kit # 053572A1
Suction Line Size	1111 3 ⁵ / ₈ " 1113 3 ⁵ / ₈ " 1117 3 ⁵ / ₈ "	1111 2 ⁵ / ₈ " 1113 2 ⁵ / ₈ " 1117 3 ¹ / ₈ "
Suction Compressor Connection Size	1111 3 ⁵ / ₈ " 1113 3 ⁵ / ₈ " 1117 3 ⁵ / ₈ "	1111 3 ¹ / ₈ " 1113 3 ¹ / ₈ " 1117 3 ¹ / ₈ "
Discharge Service Valve	1111 Kit # 053572A1 1113 Kit # 053572A1 1117 Kit # 053572A1	1111 Kit # 053572A5 1113 Kit # 053572A3 1117 Kit # 053572A3
Discharge Line Size	1111 3 ¹ / ₈ " 1113 3 ¹ / ₈ " 1117 3 ¹ / ₈ "	1111 2 ¹ / ₈ " 1113 2 ⁵ / ₈ " 1117 2 ⁵ / ₈ "
Discharge Compressor Connection Size	1111 3 ¹ / ₈ " 1113 3 ¹ / ₈ " 1117 3 ¹ / ₈ "	1111 2 ⁵ / ₈ " 1113 2 ⁵ / ₈ " 1117 2 ⁵ / ₈ "
V.I. Port Size	N/A	1 ³ / ₁₆ " - 12 straight thread o-ring or ⁷ / ₈ " ODS 2-Bolt flange
L.I. Port Size	⁷ / ₈ " - 14 Straight thread o-ring boss	⁷ / ₈ " - 14 Straight thread o-ring boss
C1 Discharge Pressure Port	1 ¹ / ₁₆ " - 12 Straight thread o-ring boss & ¼" NPTF	1 ¹ / ₁₆ " - 12 Straight thread o-ring boss & ¼" NPTF
Oil Sight Glass	90° to left of terminal box	135° to right of terminal box
Unloader	Pad mounted w/separate solenoid valves	Solenoid valves integral part of unloader

SB-15A

29AUG01

The MSC-110 (6L6), (6L5) and (6N4) models have been discontinued and replaced by the new (6X6) and (6X5) models. The new MSC-110 will include a vapor injection port, which will offer a substantial increase in capacity and efficiency when utilized. We have expanded the operating range of the MSC-110 down to **0°F SST** for medium and commercial temperature applications. This will allow more direct replacements of MSC-102mm compressors that utilize vapor injection and it will expand the application range of the MSC-110.

PHYSICAL CHANGES

- All MSC-110's will be equipped with a vapor injection port.
 - This vapor port will have a 7/8" O.D. connection and an optional 2-bolt flange will be offered to those who elect to use this feature.
 - The vapor port will also have a 4-bolt hole pattern, which will enable the flange to be mounted horizontally or vertically. (See Drawing on page #3 or refer to EDS-Y-0204-0018 Rev. 3 or later).
 - The oil sight glass will be relocated to avoid interference with vapor injection tube piping. (See Drawing on page #3 or refer to EDS-Y-0204-0018 Rev. 3 or later).
 - The suction and discharge connections where the service valves bolt onto have decreased in size.
 - The new suction opening size is now 3-1/8" and the new discharge opening size is now 2-5/8". This will allow the installer to use smaller service valves, which will be an additional saving compared to the larger sized valves.
- * **Existing 110mm compressor replacements may require some re-piping to accommodate the reduced sizes.**

ELIMINATION OF WATER-COOLED (6N4) MODELS

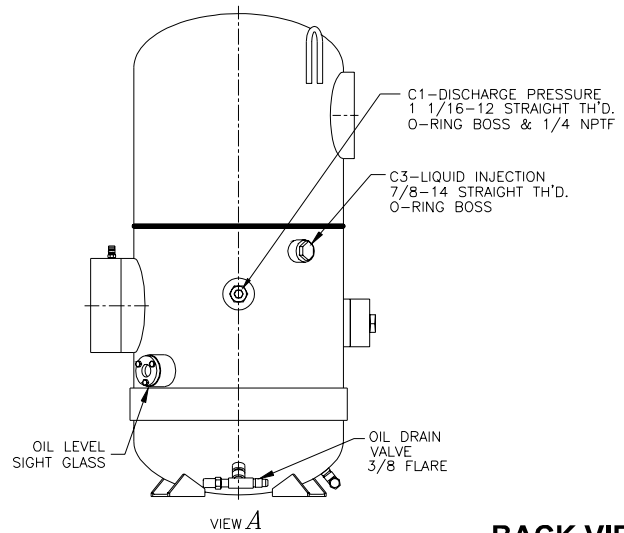
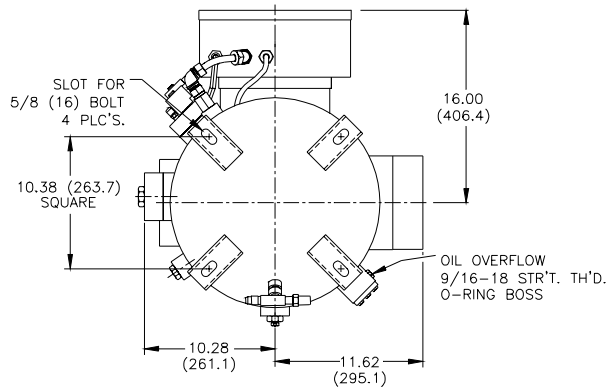
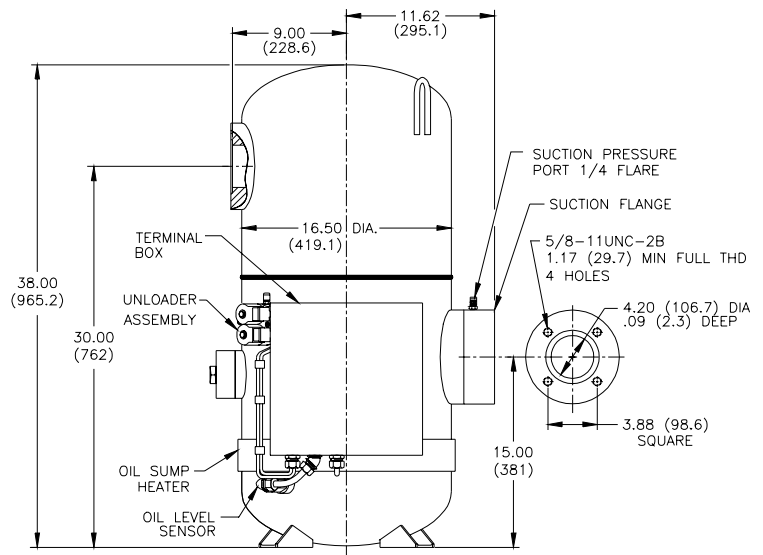
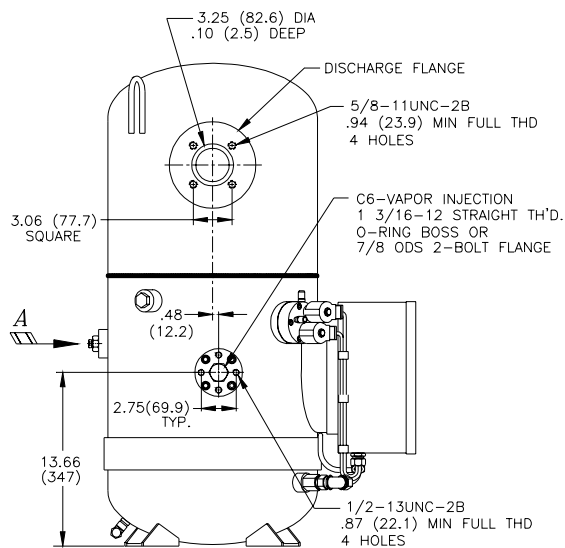
We are no longer manufacturing an OEM "water cooled" MSC-110 version. All water-cooled applications will be chosen using the new air-cooled (6X6) or (6X5) models. The operating range will continue to cover both air and water-cooled applications.

For replacement situations the **new (6X6) model** will support existing (6N4) models in the field.

If you have any specific questions about the new MSC-110 please contact our Applications Engineering Department.

MSC 110 with Vapor Injection

Compressor Dimensions in inches (mm)

FRONT VIEW
SIDE VIEW

BACK VIEW
BOTTOM VIEW